



### Description and Features

WI500 is a passive piezoelectric AE sensor with wideband and preamplifier built-in. It is specially designed to provide a flat frequency response to acoustic emission signals over its entire frequency bandwidth.

### Technical Specs

<b>Resonant Freq.</b> Ref V/(m/s)	500kHz
<b>Frequency Range</b>	100kHz-1000kHz
<b>Integral preamplifier</b>	40dB28V
<b>Preamp. Impedance</b>	50 Ω
<b>Sensitivity Peak</b> Ref V/(m/s)	>65dB
<b>Working Temp.</b>	-20 to 50°C
<b>Size (DxH)</b>	22×25.5 mm
<b>Weight</b>	33 g
<b>Case Material</b>	SUS-304
<b>Face Material</b>	Ceramic
<b>Protecting Grade</b>	IP62
<b>Connector</b>	SMA
<b>Connector Location</b>	Side



### Applications

It is well suited for laboratory studying of surface displacement of structures due to different AE modes. It also could be used in applications requiring frequency analysis and composites research. It could be easily mounted by a magnetic hold-down.



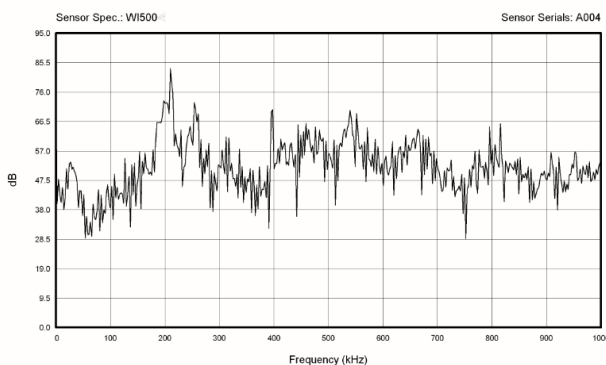
### Standards

<b>Calibration standard</b>	ISO12714
	GB/T 19801

### Accessories

<b>Signal cable model</b>	RG178/RG316
<b>Hold-down</b>	Saddle type

### AE SENSOR CALIBRATION CERTIFICATE



### Certification



QingCheng AE Institute (Guangzhou) Co., Ltd

**Website:** [www.aendt.com](http://www.aendt.com) **Tel:** +86-20-32290092 **E-mail:** [sales2@ae-ndt.com](mailto:sales2@ae-ndt.com) **Skype:** Jessicajia  
**Address:** Room 601-9, Building 3, 232 Kezhu Road, Huangpu District, Guangzhou City, Guangdong Province, CHINA

Specifications subject to change without notice. Copyright @ 2022 Qingcheng AE Institute. All Rights Reserved.