

### Description and Features

W500/1 is a passive piezoelectric AE sensor with wideband and waterproof characteristic. It is specially designed to provide a flat frequency response to acoustic emission signals over its entire frequency bandwidth.

### Applications



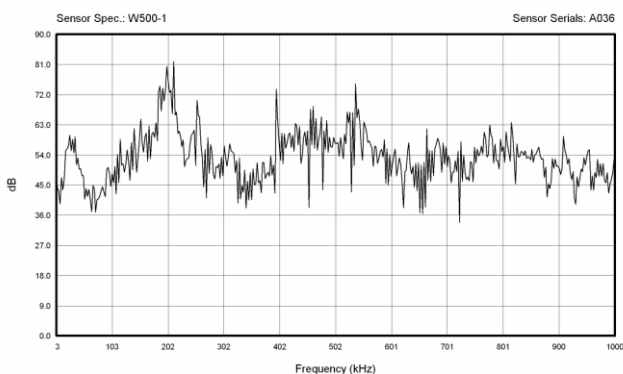
It is well suited for laboratory studying of surface displacement of structures due to different AE modes. It also could be used in applications requiring frequency analysis and composites research. It could be easily mounted by a magnetic hold-down.

### Standards



Calibration standard	ISO12714
	GB/T 19801

#### AE SENSOR CALIBRATION CERTIFICATE



### Technical Specs

Resonant Freq. Ref V/(m/s)	500kHz
Frequency Range	100kHz-1000kHz
Sensitivity Peak Ref V/(m/s)	>65dB
Working Temp. Size (DxH)	-20 to 120°C 19x15mm
Weight	45 g
Case Material	SUS-304
Face Material	Ceramic
Protecting Grade	IP68
Connector	BNC on integral cable
Connector Location	Side

### Accessories

Signal cable model	SYV-50-3/ STYV-50-2
Hold-down	M20
Preamplifier	PAS/PAV

### Certification



QingCheng AE Institute (Guangzhou) Co., Ltd

Website: [www.aendt.com](http://www.aendt.com) Tel: +86-20-32290092 E-mail: [sales2@ae-ndt.com](mailto:sales2@ae-ndt.com) Skype: Jessicajia  
Address: Room 601-9, Building 3, 232 Kezhu Road, Huangpu District, Guangzhou City, Guangdong Province, CHINA

Specifications subject to change without notice. Copyright @ 2022 Qingcheng AE Institute. All Rights Reserved.