



### Applications

The LS 5VDC is well suited for detecting crack and fault of metallic equipments in harsh environment that requires intrinsic safety and for structures health monitoring such as pipelines, vessels, bridges etc.



### Standards

<b>Calibration standard</b>	ISO12714
	GB/T 19801
<b>Anti-explosion standard</b>	GB3836.4-2010
	GB12476.4-2010

### Description and Features

The LS 5VDC is an intrinsically safe explosion-proof sensor with build-in 26dB5V preamplifier.

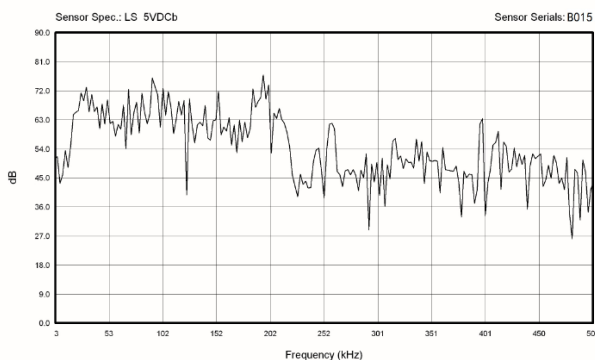
### Technical Specs

<b>Resonant Freq. Ref V/(m/s)</b>	150kHz
<b>Frequency Range</b>	60kHz-400kHz
<b>Sensitivity Peak Ref V/(m/s)</b>	>75dB
<b>Integral preamplifier</b>	26dB5V
<b>Preamp. Impedance</b>	50 Ω
<b>Working Temp.</b>	-20 to 50°C
<b>Size (DxH)</b>	22×25.5mm
<b>Weight</b>	39g
<b>Case Material</b>	SUS-304
<b>Face Material</b>	Ceramic
<b>Protecting Grade</b>	IP62
<b>Connector</b>	SMA
<b>Connector Location</b>	Side

### Accessories

<b>Signal cable model</b>	RG178/RG316
<b>Hold-down</b>	Saddle Type

### AE SENSOR CALIBRATION CERTIFICATE



### Certification



QingCheng AE Institute (Guangzhou) Co., Ltd

**Website:** [www.aendt.com](http://www.aendt.com) **Tel:** +86-20-32290092 **E-mail:** [sales2@ae-ndt.com](mailto:sales2@ae-ndt.com) **Skype:** Jessicajia

**Address:** Room 601-9, Building 3, 232 Kezhu Road, Huangpu District, Guangzhou City, Guangdong Province, CHINA