



## Description and Features

The GM150/1 is a passive piezoelectric miniature AE sensor. The connector was designed on the side of the sensor and the small size makes it possible to work in narrow space.



## Applications

The sensor can be used for monitoring common structures such as pipelines, vessels, bridges, storage tanks etc. It can easily be mounted in small and tight space.



## Standards

Calibration standard	
	ISO12714
	GB/T 19801

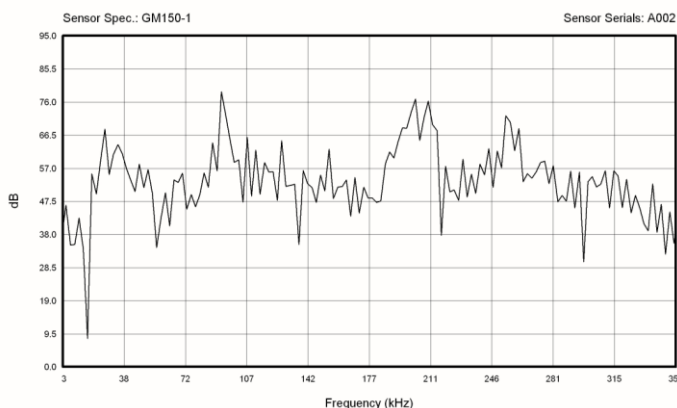
## Technical Specs

Resonant Freq. Ref V/(m/s)	150kHz
Frequency Range	70kHz-280kHz
Sensitivity Peak Ref V/(m/s)	>68dB
Working Temp.	-20 to 120°C
Size (DxH)	7.8x14mm
Weight	5 g
Case Material	SUS-304
Face Material	Ceramic
Protecting Grade	IP62
Connector	M5
Connector Location	Side

## Accessories

Signal cable model	RG178/RG316
Hold-down	Saddle type
Pre-amplifier	PAS/PAV

## AE SENSOR CALIBRATION CERTIFICATE



## Certification



QingCheng AE Institute (Guangzhou) Co., Ltd

Website: [www.aendt.com](http://www.aendt.com) Tel: +86-20-32290092 E-mail: [sales2@ae-ndt.com](mailto:sales2@ae-ndt.com) Skype: Jessicajia

Address: Room 601-9, Building 3, 232 Kezhu Road, Huangpu District, Guangzhou City, Guangdong Province, CHINA

Specifications subject to change without notice. Copyright @ 2022 Qingcheng AE Institute. All Rights Reserved.