



Applications

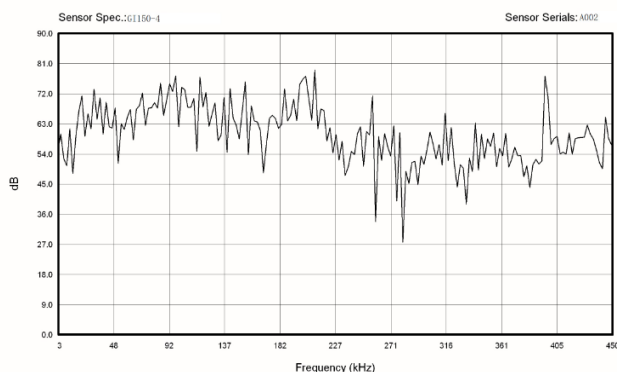
This sensor is well suited for detecting crack and fault of metallic equipment, and for structures health monitoring such as pipelines, pressure vessels, bridges etc.



Standards

| | |
|----------------------|------------|
| Calibration standard | ISO12714 |
| | GB/T 19801 |

AE SENSOR CALIBRATION CERTIFICATE



Description and Features

The GI150/4 is a narrowband integrated sensor with built-in 40dB28V preamplifier. Stainless steel material makes it reliable and durable and its 60 kHz-400 kHz bandwidth covering the frequency range of most AE applications.

Technical Specs

| | |
|---------------------------------|--------------|
| Resonant Freq. Ref V/(m/s) | 150kHz |
| Frequency Range | 60kHz-400kHz |
| Sensitivity Peak Ref V/(m/s) | >75dB |
| Integral preamplifier | 40dB28V |
| Preamp. Impedance | 50 Ω |
| Working Temp. | -20 to 50°C |
| Size (DxH) | 30×35mm |
| Weight | 115 g |
| Case Material | SUS-304 |
| Face Material | Ceramic |
| Protecting Grade | IP62 |
| Connector | M5 |
| Connector Location | Side |

Accessories

| | |
|--------------------|-------------|
| Signal cable model | RG178/RG316 |
| Hold-down | M36 |

Certification



QingCheng AE Institute (Guangzhou) Co., Ltd

Website: www.aendt.com Tel: +86-20-32290092 E-mail: sales2@ae-ndt.com Skype: Jessicajia
Address: Room 601-9, Building 3, 232 Kezhu Road, Huangpu District, Guangzhou City, Guangdong Province, CHINA

Specifications subject to change without notice. Copyright @ 2022 Qingcheng AE Institute. All Rights Reserved.