



Description and Features

The GH150/1 is a high temperature sensor with 0.5 meters high temperature resistant metallic tube and 2 meters cable, shell and contact surface are stainless invar steel, could be installed in ultra high temperature environment (up to 350°C).

Applications



GH150/1 is suitable for using in harsh environment such as power plants, and for detecting of metallic pressure vessels, tanks, pipelines etc.

Standards



Calibration standard	ISO12714
	GB/T 19801

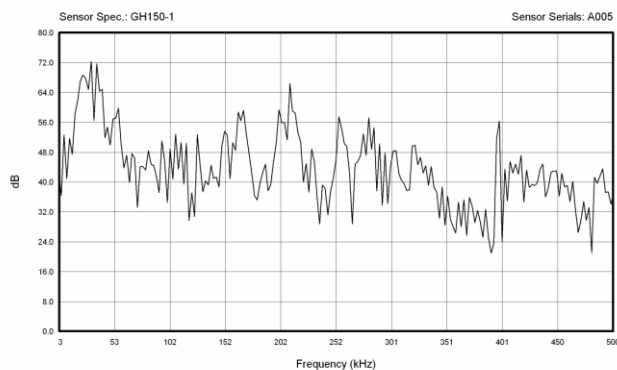
Technical Specs

Resonant Freq. Ref V/(m/s)	150kHz
Frequency Range	60kHz-400kHz
Sensitivity Peak Ref V/(m/s)	>73dB
Working Temp.	-20 to 350°C
Size (DxH)	19×19.5mm
Weight	105 g
Case Material	Stainless Invar Steel
Face Material	Stainless Invar Steel
Protecting Grade	IP68
Connector	BNC on integral cable
Connector Location	Side

Accessories

Signal cable model	SYV-50-3/ STYV-50-2
Hold-down	H20
Preamplifier	PAS/PAV

AE SENSOR CALIBRATION CERTIFICATE



Certification



QingCheng AE Institute (Guangzhou) Co., Ltd

Website: www.aendt.com **Tel:** +86-20-32290092 **E-mail:** sales2@ae-ndt.com **Skype:** Jessicajia
 Address: Room 601-9, Building 3, 232 Kezhu Road, Huangpu District, Guangzhou City, Guangdong Province, CHINA

Specifications subject to change without notice. Copyright @ 2022 Qingcheng AE Institute. All Rights Reserved.