

### Description and Features

The G80 is a passive piezoelectric AE sensor with narrowband. Stainless steel structure makes it reliable and durable. And 20kHz-180kHz bandwidth makes it suitable for detecting low frequency acoustic emission signals. It belongs to the low and medium frequency sensor.

### Technical Specs

<b>Resonant Freq.</b> Ref V/(m/s)	80kHz
<b>Frequency Range</b>	20kHz-180kHz
<b>Sensitivity Peak</b> Ref V/(m/s)	>70dB
<b>Working Temp.</b>	-20 to 80°C
<b>Size (DxH)</b>	19×19.5mm
<b>Weight</b>	33g
<b>Case Material</b>	SUS-304
<b>Face Material</b>	Ceramic
<b>Protecting Grade</b>	IP62
<b>Connector</b>	M5
<b>Connector Location</b>	Side



### Applications

The low frequency response makes it suitable for monitoring large objects or objects made of highly attenuating material, such as rocks or the soil. It also could be used for monitoring leakage of pressure vessels and for detecting partial discharge.



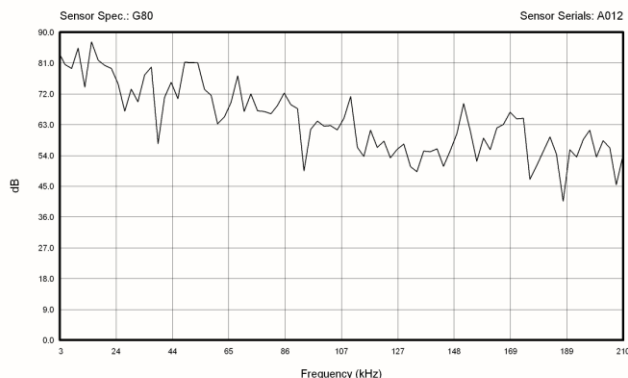
### Standards

<b>Calibration standard</b>	ISO12714
	GB/T 19801

### Accessories

<b>Signal cable model</b>	RG178/RG316
<b>Hold-down</b>	M20A
<b>Preamplifier</b>	PAS/PAV

### AE SENSOR CALIBRATION CERTIFICATE



### Certification



QingCheng AE Institute (Guangzhou) Co., Ltd

**Website:** [www.aendt.com](http://www.aendt.com) **Tel:** +86-20-32290092 **E-mail:** [sales2@ae-ndt.com](mailto:sales2@ae-ndt.com) **Skype:** Jessicajia  
Address: Room 601-9, Building 3, 232 Kezhu Road, Huangpu District, Guangzhou City, Guangdong Province, CHINA

Specifications subject to change without notice. Copyright @ 2022 Qingcheng AE Institute. All Rights Reserved.