



Description and Features

The G150 is a passive piezoelectric AE sensor with narrowband and high sensitivity. Stainless steel material makes it reliable and enduring and its 60 kHz-400 kHz bandwidth covering the frequency range of most AE applications.

Technical Specs

Resonant Freq. Ref V/(m/s)	150kHz
Frequency Range	60kHz-400kHz
Sensitivity Peak Ref V/(m/s)	>75dB
Working Temp. Size (DxH)	-20 to 120°C 19x15mm
Weight	23g
Case Material	SUS-304
Face Material	Ceramic
Protecting Grade	IP62
Connector	M5
Connector Location	Side

Accessories

Signal cable model	RG178/RG316
Hold-down	M20
Preamplifier	PAS/PAV



Applications

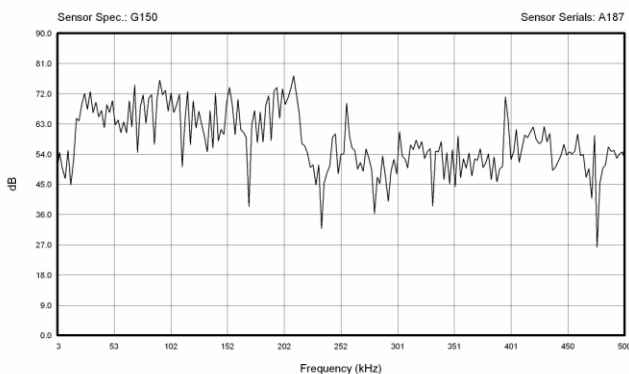
This sensor is suitable for the crack or fault diagnosis of metal, and also for structural health monitoring of large structures like storage tanks, pipelines etc. It could be easily mounted by a magnetic hold-down.



Standards

Calibration standard	ISO12714
	GB/T 19801

AE SENSOR CALIBRATION CERTIFICATE



Certification



QingCheng AE Institute (Guangzhou) Co., Ltd

Website: www.aendt.com **Tel:** +86-20-32290092 **E-mail:** sales2@ae-ndt.com **Skype:** Jessicajia

Address: Room 601-9, Building 3, 232 Kezhu Road, Huangpu District, Guangzhou City, Guangdong Province, CHINA

Specifications subject to change without notice. Copyright @ 2022 Qingcheng AE Institute. All Rights Reserved.