

Description and Features

The G150/2 is a passive piezoelectric all-metal AE sensor with narrowband and high sensitivity, also it is waterproof. Pure metal structure makes it reliable and durable, its 60 kHz-400 kHz bandwidth covering the frequency range of most AE applications.

Technical Specs

Resonant Freq. Ref V/(m/s)	150kHz
Frequency Range	60kHz-400kHz
Sensitivity Peak Ref V/(m/s)	>70dB
Working Temp.	-20 to 120°C
Size (DxH)	19x19.5mm
Weight	55g
Case Material	SUS-304
Face Material	SUS-304
Protecting Grade	IP68
Connector	BNC on integral cable
Connector Location	Side



Applications

This sensor is suitable for the crack or fault diagnosis of metal under water, and also for structural health monitoring of large structures like storage tanks, pipelines etc. It could be easily mounted by a magnetic hold-down.



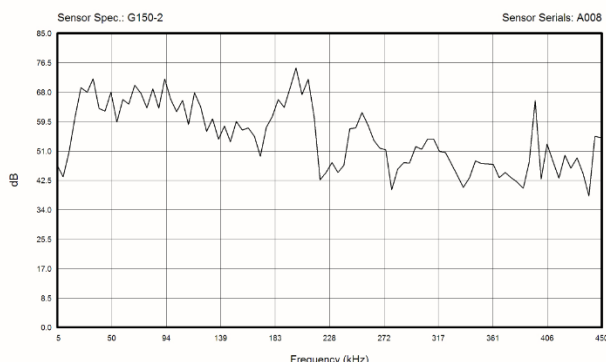
Standards

Calibration standard	ISO12714
	GB/T 19801

Accessories

Signal cable model	SYV-50-3/ STYV-50-2
Hold-down	M20A
Preamplifier	PAS/PAV

AE SENSOR CALIBRATION CERTIFICATE



Certification



QingCheng AE Institute (Guangzhou) Co., Ltd

Website: www.aendt.com Tel: +86-20-32290092 E-mail: sales2@ae-ndt.com Skype: Jessicajia

Address: Room 601-9, Building 3, 232 Kezhu Road, Huangpu District, Guangzhou City, Guangdong Province, CHINA

Specifications subject to change without notice. Copyright @ 2022 Qingcheng AE Institute. All Rights Reserved.