



Description and Features

The G150/1 is a passive piezoelectric AE sensor with narrowband and high sensitivity, also it is waterproof. Stainless steel material makes it reliable and durable and its 60 kHz-400 kHz bandwidth covering the frequency range of most AE applications.

Technical Specs

Resonant Freq. Ref V/(m/s)	150kHz
Frequency Range	60kHz-400kHz
Sensitivity Peak Ref V/(m/s)	>75dB
Working Temp. Size (DxH)	-20 to 120°C 19x15mm
Weight	50g
Case Material	SUS-304
Face Material	Ceramic
Protecting Grade	IP68
Connector	BNC on integral cable
Connector Location	Side



Applications

This sensor is suitable for the crack or fault diagnosis of metal under water, and also for structural health monitoring of large structures like storage tanks, pipelines etc. It could be easily mounted by a magnetic hold-down.



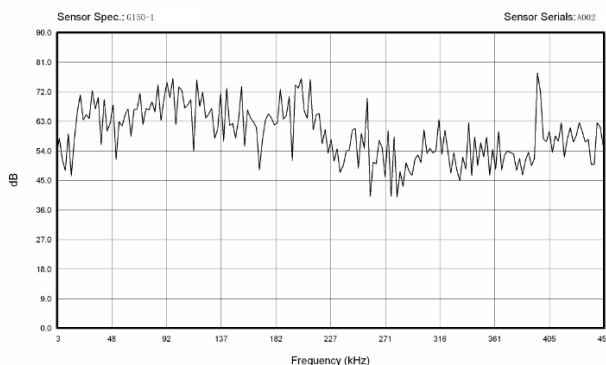
Standards

Calibration standard	ISO12714
	GB/T 19801

Accessories

Signal cable model	SYV-50-3/ STYV-50-2
Hold-down	M20
Preamplifier	PAS/PAV

AE SENSOR CALIBRATION CERTIFICATE



Certification



QingCheng AE Institute (Guangzhou) Co., Ltd

Website: www.aendt.com **Tel:** +86-20-32290092 **E-mail:** sales2@ae-ndt.com **Skype:** Jessicajia
Address: Room 601-9, Building 3, 232 Kezhu Road, Huangpu District, Guangzhou City, Guangdong Province, CHINA

Specifications subject to change without notice. Copyright © 2022 Qingcheng AE Institute. All Rights Reserved.