



Description and Features

The GI80 is a passive piezoelectric AE sensor with built-in 40dB28V preamplifier. And 20kHz-180kHz bandwidth makes it suitable for detecting low frequency acoustic emission signals.

Technical Specs

Resonant Freq. Ref V/(m/s)	80kHz
Frequency Range	20kHz-180kHz
Sensitivity Peak Ref V/(m/s)	>70dB
Integral preamplifier	40dB28V
Preamp. Impedance	50 Ω
Working Temp.	-20 to 50°C
Size (DxH)	22x25.5mm
Weight	43 g
Case Material	SUS-304
Face Material	Ceramic
Protecting Grade	IP62
Connector	SMA
Connector Location	Side

Accessories

Signal cable model	SYV-50-3/ STYV-50-2
Hold-down	Saddle type

Certification



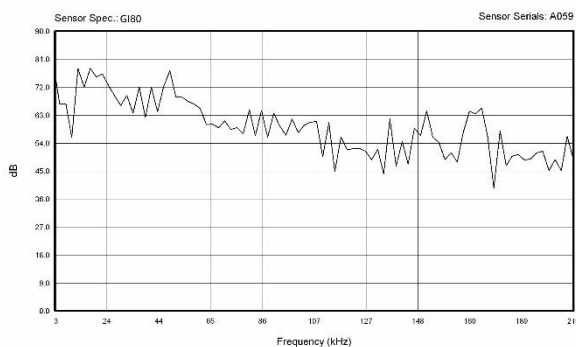
Applications

The low frequency response makes it suitable for monitoring conditions of large objects like concrete, steel structures and geologic structures. It also could be used for monitoring leakage and corrosion of storage tanks or valves and for detecting partial discharge.

Standards

Calibration standard	ISO12714
	GB/T 19801

AE SENSOR CALIBRATION CERTIFICATE



QingCheng AE Institute (Guangzhou) Co., Ltd

Website: www.en.ae-ndt.com **Tel:** +86-20-32290092 **E-mail:** sales2@ae-ndt.com **Skype:** Jessicajia
Address: Room 601-9, Building 3, 232 Kezhu Road, Huangpu District, Guangzhou City, Guangdong Province, CHINA